



## SUNNYSIDE COAL MINE – MONTHLY MONITORING SUMMARY

### Site Information

**EPL No:** 12957

**EPA Website Link:** <http://epa.nsw.gov.au/prpoeoapp/ViewPOEOLicence.aspx?DOCID=40292&SYSUID=1&LICID=12957>

**Licensee:** Namoi Mining Pty Ltd

**Licensee Address:** Sunnyside Coal Project, 259 Coocooboona Lane, GUNNEDAH NSW 2380

**EPL Monitoring Points:** See Figure 1 below

**Sampling Period:** January 2018

**Obtained Date:** 6<sup>th</sup> February 2018

**Publication Date:** 19<sup>th</sup> February 2018

**Table 1 - No Pollutant Limits Apply**

EPL ID	Pollutant	Units of Measure	Monitoring Frequency	No. of Samples for the Month	Date(s) Sampled	Date(s) Obtained	Min Value	Mean Value	Median Value	Max or Only Value
1	Particulates-Deposited Matter	g/m <sup>2</sup> /month	Continuous	1	19/01/18	31/01/18	-	-	-	1.0
2	Particulates-Deposited Matter	g/m <sup>2</sup> /month	Continuous	1	19/01/18	31/01/18	-	-	-	2.4
4	Particulates-Deposited Matter	g/m <sup>2</sup> /month	Continuous	1	19/01/18	31/01/18	-	-	-	4.6
5	Particulates-Deposited Matter	g/m <sup>2</sup> /month	Continuous	1	19/01/18	31/01/18	-	-	-	1.1
6	Particulates-Deposited Matter	g/m <sup>2</sup> /month	Continuous	1	19/01/18	31/01/18	-	-	-	1.4
7	PM <sub>10</sub>	µg/m <sup>3</sup>	Every 6 days	5	Various	6/02/18	10.2	16.7	16.4	23.0
9	Conductivity	µS/cm	Special Frequency 1*	-	-	-	-	-	-	-
	Total organic carbon	mg/L					-	-	-	-
10	Conductivity	µS/cm		-	-	-	-	-	-	-

## SUNNYSIDE COAL MINE – MONTHLY MONITORING SUMMARY

EPL ID	Pollutant	Units of Measure	Monitoring Frequency	No. of Samples for the Month	Date(s) Sampled	Date(s) Obtained	Min Value	Mean Value	Median Value	Max or Only Value
	Total organic carbon	mg/L	Special Frequency 1*				-	-	-	-
11	TSS	mg/L	Special Frequency 2**	-	-	-	-	-	-	-
	Conductivity	µS/cm		-			-	-	-	
	Oil & Grease	mg/L		-			-	-	-	
	pH	pH		-			-	-	-	
	Total organic carbon	mg/L		-			-	-	-	
12	TSS	mg/L	Special Frequency 2**	-	-	-	-	-	-	-
	Conductivity	µS /cm		-			-	-	-	
	Oil & Grease	mg/L		-			-	-	-	
	pH	pH		-			-	-	-	
	Total organic carbon	mg/L		-			-	-	-	

**Table 2 - Pollutant Limits Apply**

EPL ID	Pollutant	Units of Measure	Monitoring Frequency	No. of Samples for the Month	Date Sampled	Date Obtained	Min Value	Max Value	100%ile Limit	Exceedance (Yes/No)	Comments
9	TSS	mg/L	Special Frequency 1*	0	-	-	-	-	50	-	No discharge
	Oil & Grease	mg/L		0			-	-	10	-	No discharge
	pH	pH		0			-	-	6.5-8.5	-	No discharge
10	TSS	mg/L	Special Frequency 1*	0	-	-	-	-	50	-	No discharge
	Oil & Grease	mg/L		0			-	-	10	-	No discharge
	pH	pH		0			-	-	6.5-8.5	-	No discharge

\* Special Frequency 1 means the collection of samples as soon as practicable after each discharge commences and in any case not more than 12 hours after each discharge commences.

**SUNNYSIDE COAL MINE – MONTHLY MONITORING SUMMARY**

\*\* Special Frequency 2 means collection of samples quarterly (in the event of flow during the quarter) at a time when there is flow and as soon as practicable after each wet weather discharge from points 9 and 10 commences and in any case not more than 12 hours after each discharge commences.

**Table 3 – Monitoring (Blasts – Limits Apply)**

Location	Parameter	Units of Measure	Frequency	No. of Blasts for the Month	Average Value	Max or Only Value	100%ile Limit	(Potential) Non-compliance/breach
19	Blast Noise	dB (Lin Peak)	Every Blast	0	-	-	120	-
	Blast Vibration	mm/s			-	-	10	-
20	Blast Noise	dB (Lin Peak)	Every Blast	0	-	-	120	-
	Blast Vibration	mm/s			-	-	10	-
23	Blast Noise	dB (Lin Peak)	Every Blast	0	-	-	120	-
	Blast Vibration	mm/s			-	-	10	-
24	Blast Noise	dB (Lin Peak)	Every Blast	0	-	-	120	-
	Blast Vibration	mm/s			-	-	10	-

**SUNNYSIDE COAL MINE – MONTHLY MONITORING SUMMARY**

Figure 1 – EPL 12957 Monitoring Locations



## SUNNYSIDE COAL MINE – MONTHLY MONITORING SUMMARY

### Site Information

EPL No: 12957

EPA Website Link: <http://epa.nsw.gov.au/prpoeoapp/ViewPOEOLicence.aspx?DOCID=40292&SYSUID=1&LICID=12957>

Licensee: Namoi Mining Pty Ltd

Licensee Address: Sunnyside Coal Project, 259 Coocooboona Lane, GUNNEDAH NSW 2380

EPL Monitoring Points: See Figure 1 below

Sampling Period: February 2018

Obtained Date: 9<sup>th</sup> March 2018

Publication Date: 19<sup>th</sup> March 2018

Table 1 - No Pollutant Limits Apply

EPL ID	Pollutant	Units of Measure	Monitoring Frequency	No. of Samples for the Month	Date(s) Sampled	Date(s) Obtained	Min Value	Mean Value	Median Value	Max or Only Value
1	Particulates-Deposited Matter	g/m <sup>2</sup> /month	Continuous	1	19/02/18	21/02/18	-	-	-	1.08
2	Particulates-Deposited Matter	g/m <sup>2</sup> /month	Continuous	1	19/02/18	21/02/18	-	-	-	0.8
4	Particulates-Deposited Matter	g/m <sup>2</sup> /month	Continuous	1	19/02/18	21/02/18	-	-	-	2.04
5	Particulates-Deposited Matter	g/m <sup>2</sup> /month	Continuous	1	19/02/18	21/02/18	-	-	-	1.2
6	Particulates-Deposited Matter	g/m <sup>2</sup> /month	Continuous	1	19/02/18	21/02/18	-	-	-	0.7
7	PM <sub>10</sub>	µg/m <sup>3</sup>	Every 6 days	4	Various	9/03/18	5.6	14.4	14.5	22.9
9	Conductivity	µS/cm	Special Frequency 1*	-	-	-	-	-	-	-
	Total organic carbon	mg/L					-	-	-	-
10	Conductivity	µS/cm		-	-	-	-	-	-	-

## SUNNYSIDE COAL MINE – MONTHLY MONITORING SUMMARY

EPL ID	Pollutant	Units of Measure	Monitoring Frequency	No. of Samples for the Month	Date(s) Sampled	Date(s) Obtained	Min Value	Mean Value	Median Value	Max or Only Value
	Total organic carbon	mg/L	Special Frequency 1*				-	-	-	-
11	TSS	mg/L	Special Frequency 2**	-			-	-	-	-
	Conductivity	µS/cm		-			-	-	-	
	Oil & Grease	mg/L		-			-	-	-	
	pH	pH		-			-	-	-	
	Total organic carbon	mg/L		-			-	-	-	
12	TSS	mg/L	Special Frequency 2**	-			-	-	-	-
	Conductivity	µS/cm		-			-	-	-	
	Oil & Grease	mg/L		-			-	-	-	
	pH	pH		-			-	-	-	
	Total organic carbon	mg/L		-			-	-	-	

**Table 2 - Pollutant Limits Apply**

EPL ID	Pollutant	Units of Measure	Monitoring Frequency	No. of Samples for the Month	Date Sampled	Date Obtained	Min Value	Max Value	100%ile Limit	Exceedance (Yes/No)	Comments
9	TSS	mg/L	Special Frequency 1*	0			-	-	50	-	No discharge
	Oil & Grease	mg/L		0			-	-	10	-	No discharge
	pH	pH		0			-	-	6.5-8.5	-	No discharge
10	TSS	mg/L	Special Frequency 1*	0			-	-	50	-	No discharge
	Oil & Grease	mg/L		0			-	-	10	-	No discharge
	pH	pH		0			-	-	6.5-8.5	-	No discharge

\* Special Frequency 1 means the collection of samples as soon as practicable after each discharge commences and in any case not more than 12 hours after each discharge commences.

**SUNNYSIDE COAL MINE – MONTHLY MONITORING SUMMARY**

\*\* Special Frequency 2 means collection of samples quarterly (in the event of flow during the quarter) at a time when there is flow and as soon as practicable after each wet weather discharge from points 9 and 10 commences and in any case not more than 12 hours after each discharge commences.

**Table 3 – Monitoring (Blasts – Limits Apply)**

Location	Parameter	Units of Measure	Frequency	No. of Blasts for the Month	Average Value	Max or Only Value	100%ile Limit	(Potential) Non-compliance/breach
19	Blast Noise	dB (Lin Peak)	Every Blast	0	-	-	120	-
	Blast Vibration	mm/s			-	-	10	-
20	Blast Noise	dB (Lin Peak)	Every Blast	0	-	-	120	-
	Blast Vibration	mm/s			-	-	10	-
23	Blast Noise	dB (Lin Peak)	Every Blast	0	-	-	120	-
	Blast Vibration	mm/s			-	-	10	-
24	Blast Noise	dB (Lin Peak)	Every Blast	0	-	-	120	-
	Blast Vibration	mm/s			-	-	10	-

**SUNNYSIDE COAL MINE – MONTHLY MONITORING SUMMARY**

Figure 1 – EPL 12957 Monitoring Locations





## SUNNYSIDE COAL MINE – MONTHLY MONITORING SUMMARY

### Site Information

**EPL No:** 12957

**EPA Website Link:** <http://epa.nsw.gov.au/prpoeoapp/ViewPOEOLicence.aspx?DOCID=40292&SYSUID=1&LICID=12957>

**Licensee:** Namoi Mining Pty Ltd

**Licensee Address:** Sunnyside Coal Project, 259 Coocooboona Lane, GUNNEDAH NSW 2380

**EPL Monitoring Points:** See Figure 1 below

**Sampling Period:** March 2018

**Obtained Date:** 18<sup>th</sup> April 2018

**Publication Date:** 23<sup>rd</sup> April 2018

**Table 1 - No Pollutant Limits Apply**

EPL ID	Pollutant	Units of Measure	Monitoring Frequency	No. of Samples for the Month	Date(s) Sampled	Date(s) Obtained	Min Value	Mean Value	Median Value	Max or Only Value
1	Particulates-Deposited Matter	g/m <sup>2</sup> /month	Continuous	1	21/03/18	3/04/18	-	-	-	4.0
2	Particulates-Deposited Matter	g/m <sup>2</sup> /month	Continuous	1	21/03/18	3/04/18	-	-	-	14.2
4	Particulates-Deposited Matter	g/m <sup>2</sup> /month	Continuous	1	21/03/18	3/04/18	-	-	-	11.9
5	Particulates-Deposited Matter	g/m <sup>2</sup> /month	Continuous	1	21/03/18	3/04/18	-	-	-	4.7
6	Particulates-Deposited Matter	g/m <sup>2</sup> /month	Continuous	1	21/03/18	3/04/18	-	-	-	2.6
7	PM <sub>10</sub>	µg/m <sup>3</sup>	Every 6 days	4	Various	18/04/18	7.2	17.6	14.5	39.5
9	Conductivity	µS/cm	Special Frequency 1*	-	-	-	-	-	-	-
	Total organic carbon	mg/L					-	-	-	-
10	Conductivity	µS/cm		-	-	-	-	-	-	-

## SUNNYSIDE COAL MINE – MONTHLY MONITORING SUMMARY

EPL ID	Pollutant	Units of Measure	Monitoring Frequency	No. of Samples for the Month	Date(s) Sampled	Date(s) Obtained	Min Value	Mean Value	Median Value	Max or Only Value
	Total organic carbon	mg/L	Special Frequency 1*				-	-	-	-
11	TSS	mg/L	Special Frequency 2**	-			-	-	-	-
	Conductivity	µS/cm		-			-	-	-	
	Oil & Grease	mg/L		-			-	-	-	
	pH	pH		-			-	-	-	
	Total organic carbon	mg/L		-			-	-	-	
12	TSS	mg/L	Special Frequency 2**	-			-	-	-	-
	Conductivity	µS /cm		-			-	-	-	
	Oil & Grease	mg/L		-			-	-	-	
	pH	pH		-			-	-	-	
	Total organic carbon	mg/L		-			-	-	-	

**Table 2 - Pollutant Limits Apply**

EPL ID	Pollutant	Units of Measure	Monitoring Frequency	No. of Samples for the Month	Date Sampled	Date Obtained	Min Value	Max Value	100%ile Limit	Exceedance (Yes/No)	Comments
9	TSS	mg/L	Special Frequency 1*	0	-	-	-	-	50	-	No discharge
	Oil & Grease	mg/L		0			-	-	10	-	No discharge
	pH	pH		0			-	-	6.5-8.5	-	No discharge
10	TSS	mg/L	Special Frequency 1*	0	-	-	-	-	50	-	No discharge
	Oil & Grease	mg/L		0			-	-	10	-	No discharge
	pH	pH		0			-	-	6.5-8.5	-	No discharge

\* Special Frequency 1 means the collection of samples as soon as practicable after each discharge commences and in any case not more than 12 hours after each discharge commences.

**SUNNYSIDE COAL MINE – MONTHLY MONITORING SUMMARY**

\*\* Special Frequency 2 means collection of samples quarterly (in the event of flow during the quarter) at a time when there is flow and as soon as practicable after each wet weather discharge from points 9 and 10 commences and in any case not more than 12 hours after each discharge commences.

**Table 3 – Monitoring (Blasts – Limits Apply)**

Location	Parameter	Units of Measure	Frequency	No. of Blasts for the Month	Average Value	Max or Only Value	100%ile Limit	(Potential) Non-compliance/breach
19	Blast Noise	dB (Lin Peak)	Every Blast	1	-	98.7	120	No
	Blast Vibration	mm/s			-	0.65	10	No
20	Blast Noise	dB (Lin Peak)	Every Blast	1	-	95.6	120	No
	Blast Vibration	mm/s			-	0.89	10	No
23	Blast Noise	dB (Lin Peak)	Every Blast	1	-	97.7	120	No
	Blast Vibration	mm/s			-	0.27	10	No
24	Blast Noise	dB (Lin Peak)	Every Blast	1	-	103.3	120	No
	Blast Vibration	mm/s			-	0.44	10	No

**SUNNYSIDE COAL MINE – MONTHLY MONITORING SUMMARY**

Figure 1 – EPL 12957 Monitoring Locations



## SUNNYSIDE COAL MINE – MONTHLY MONITORING SUMMARY

### Site Information

**EPL No:** 12957

**EPA Website Link:** <http://epa.nsw.gov.au/prpoeoapp/ViewPOEOLicence.aspx?DOCID=40292&SYSUID=1&LICID=12957>

**Licensee:** Namoi Mining Pty Ltd

**Licensee Address:** Sunnyside Coal Project, 259 Coocooboona Lane, GUNNEDAH NSW 2380

**EPL Monitoring Points:** See Figure 1 below

**Sampling Period:** April 2018

**Obtained Date:** 9<sup>th</sup> May 2018

**Publication Date:** 15<sup>th</sup> May 2018

**Table 1 - No Pollutant Limits Apply**

EPL ID	Pollutant	Units of Measure	Monitoring Frequency	No. of Samples for the Month	Date(s) Sampled	Date(s) Obtained	Min Value	Mean Value	Median Value	Max or Only Value
1	Particulates-Deposited Matter	g/m <sup>2</sup> /month	Continuous	1	19/04/18	2/05/18	-	-	-	2.1
2	Particulates-Deposited Matter	g/m <sup>2</sup> /month	Continuous	1	19/04/18	2/05/18	-	-	-	3.5
4	Particulates-Deposited Matter	g/m <sup>2</sup> /month	Continuous	1	19/04/18	2/05/18	-	-	-	2.4
5	Particulates-Deposited Matter	g/m <sup>2</sup> /month	Continuous	1	19/04/18	2/05/18	-	-	-	4.6
6	Particulates-Deposited Matter	g/m <sup>2</sup> /month	Continuous	1	19/04/18	2/05/18	-	-	-	1.1
7	PM <sub>10</sub>	µg/m <sup>3</sup>	Every 6 days	5	Various	9/05/18	8.5	17.1	15.0	29.2
9	Conductivity	µS/cm	Special Frequency 1*	-	-	-	-	-	-	-
	Total organic carbon	mg/L					-	-	-	-
10	Conductivity	µS/cm		-	-	-	-	-	-	-

## SUNNYSIDE COAL MINE – MONTHLY MONITORING SUMMARY

EPL ID	Pollutant	Units of Measure	Monitoring Frequency	No. of Samples for the Month	Date(s) Sampled	Date(s) Obtained	Min Value	Mean Value	Median Value	Max or Only Value
	Total organic carbon	mg/L	Special Frequency 1*				-	-	-	-
11	TSS	mg/L	Special Frequency 2**	-	-	-	-	-	-	-
	Conductivity	µS/cm		-			-	-	-	
	Oil & Grease	mg/L		-			-	-	-	
	pH	pH		-			-	-	-	
	Total organic carbon	mg/L		-			-	-	-	
12	TSS	mg/L	Special Frequency 2**	-	-	-	-	-	-	-
	Conductivity	µS /cm		-			-	-	-	
	Oil & Grease	mg/L		-			-	-	-	
	pH	pH		-			-	-	-	
	Total organic carbon	mg/L		-			-	-	-	

**Table 2 - Pollutant Limits Apply**

EPL ID	Pollutant	Units of Measure	Monitoring Frequency	No. of Samples for the Month	Date Sampled	Date Obtained	Min Value	Max Value	100%ile Limit	Exceedance (Yes/No)	Comments
9	TSS	mg/L	Special Frequency 1*	0	-	-	-	-	50	-	No discharge
	Oil & Grease	mg/L		0			-	-	10	-	No discharge
	pH	pH		0			-	-	6.5-8.5	-	No discharge
10	TSS	mg/L	Special Frequency 1*	0	-	-	-	-	50	-	No discharge
	Oil & Grease	mg/L		0			-	-	10	-	No discharge
	pH	pH		0			-	-	6.5-8.5	-	No discharge

\* Special Frequency 1 means the collection of samples as soon as practicable after each discharge commences and in any case not more than 12 hours after each discharge commences.

**SUNNYSIDE COAL MINE – MONTHLY MONITORING SUMMARY**

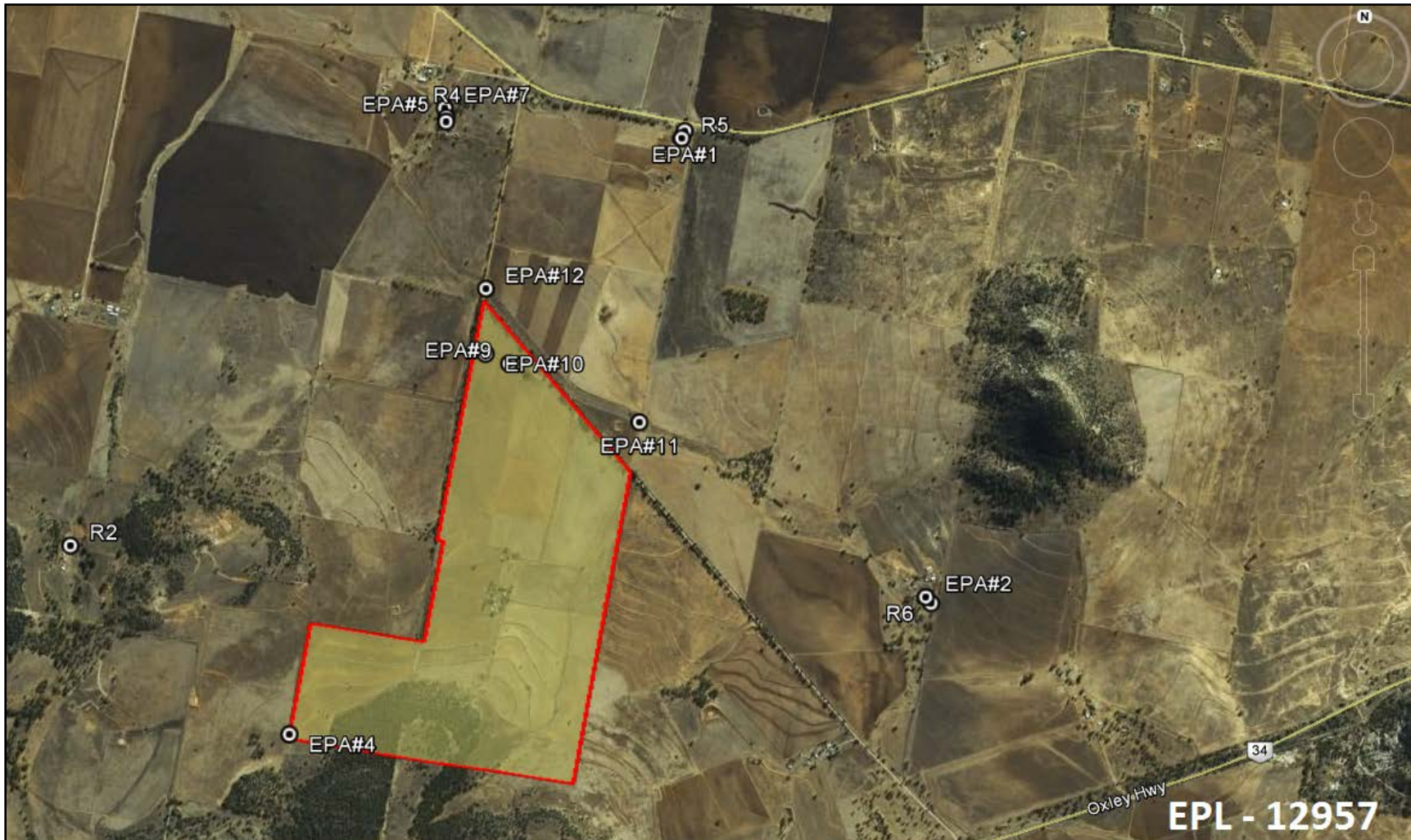
\*\* Special Frequency 2 means collection of samples quarterly (in the event of flow during the quarter) at a time when there is flow and as soon as practicable after each wet weather discharge from points 9 and 10 commences and in any case not more than 12 hours after each discharge commences.

**Table 3 – Monitoring (Blasts – Limits Apply)**

Location	Parameter	Units of Measure	Frequency	No. of Blasts for the Month	Average Value	Max or Only Value	100%ile Limit	(Potential) Non-compliance/breach
19	Blast Noise	dB (Lin Peak)	Every Blast	2	108.3	115.9	120	Yes
	Blast Vibration	mm/s			0.79	0.81	10	No
20	Blast Noise	dB (Lin Peak)	Every Blast	2	107.1	113.0	120	No
	Blast Vibration	mm/s			0.81	0.96	10	No
23	Blast Noise	dB (Lin Peak)	Every Blast	2	109.4	111.9	120	No
	Blast Vibration	mm/s			0.59	0.62	10	No
24	Blast Noise	dB (Lin Peak)	Every Blast	2	112.3	117.9	120	Yes
	Blast Vibration	mm/s			0.61	0.77	10	No

**SUNNYSIDE COAL MINE – MONTHLY MONITORING SUMMARY**

Figure 1 – EPL 12957 Monitoring Locations







## SUNNYSIDE COAL MINE – MONTHLY MONITORING SUMMARY

### Site Information

**EPL No:** 12957

**EPA Website Link:** <http://epa.nsw.gov.au/prpoeoapp/ViewPOEOLicence.aspx?DOCID=40292&SYSUID=1&LICID=12957>

**Licensee:** Namoi Mining Pty Ltd

**Licensee Address:** Sunnyside Coal Project, 259 Coocooboona Lane, GUNNEDAH NSW 2380

**EPL Monitoring Points:** See Figure 1 below

**Sampling Period:** May 2018

**Obtained Date:** 6<sup>th</sup> June 2018

**Publication Date:** 8<sup>th</sup> June 2018

**Table 1 - No Pollutant Limits Apply**

EPL ID	Pollutant	Units of Measure	Monitoring Frequency	No. of Samples for the Month	Date(s) Sampled	Date(s) Obtained	Min Value	Mean Value	Median Value	Max or Only Value
1	Particulates-Deposited Matter	g/m <sup>2</sup> /month	Continuous	1	18/05/18	30/05/18	-	-	-	0.3
2	Particulates-Deposited Matter	g/m <sup>2</sup> /month	Continuous	1	18/05/18	30/05/18	-	-	-	1.5
4	Particulates-Deposited Matter	g/m <sup>2</sup> /month	Continuous	1	18/05/18	30/05/18	-	-	-	0.9
5	Particulates-Deposited Matter	g/m <sup>2</sup> /month	Continuous	1	18/05/18	30/05/18	-	-	-	0.8
6	Particulates-Deposited Matter	g/m <sup>2</sup> /month	Continuous	1	18/05/18	30/05/18	-	-	-	0.7
7	PM <sub>10</sub>	µg/m <sup>3</sup>	Every 6 days	6	Various	6/06/18	10.8	21.9	19.5	38.8
9	Conductivity	µS/cm	Special Frequency 1*	-	-	-	-	-	-	-
	Total organic carbon	mg/L					-	-	-	-
10	Conductivity	µS/cm		-	-	-	-	-	-	-

## SUNNYSIDE COAL MINE – MONTHLY MONITORING SUMMARY

EPL ID	Pollutant	Units of Measure	Monitoring Frequency	No. of Samples for the Month	Date(s) Sampled	Date(s) Obtained	Min Value	Mean Value	Median Value	Max or Only Value
	Total organic carbon	mg/L	Special Frequency 1*				-	-	-	-
11	TSS	mg/L	Special Frequency 2**	-	-	-	-	-	-	-
	Conductivity	µS/cm		-			-	-	-	
	Oil & Grease	mg/L		-			-	-	-	
	pH	pH		-			-	-	-	
	Total organic carbon	mg/L		-			-	-	-	
12	TSS	mg/L	Special Frequency 2**	-	-	-	-	-	-	-
	Conductivity	µS /cm		-			-	-	-	
	Oil & Grease	mg/L		-			-	-	-	
	pH	pH		-			-	-	-	
	Total organic carbon	mg/L		-			-	-	-	

**Table 2 - Pollutant Limits Apply**

EPL ID	Pollutant	Units of Measure	Monitoring Frequency	No. of Samples for the Month	Date Sampled	Date Obtained	Min Value	Max Value	100%ile Limit	Exceedance (Yes/No)	Comments
9	TSS	mg/L	Special Frequency 1*	0	-	-	-	-	50	-	No discharge
	Oil & Grease	mg/L		0			-	-	10	-	No discharge
	pH	pH		0			-	-	6.5-8.5	-	No discharge
10	TSS	mg/L	Special Frequency 1*	0	-	-	-	-	50	-	No discharge
	Oil & Grease	mg/L		0			-	-	10	-	No discharge
	pH	pH		0			-	-	6.5-8.5	-	No discharge

\* Special Frequency 1 means the collection of samples as soon as practicable after each discharge commences and in any case not more than 12 hours after each discharge commences.

## SUNNYSIDE COAL MINE – MONTHLY MONITORING SUMMARY

\*\* Special Frequency 2 means collection of samples quarterly (in the event of flow during the quarter) at a time when there is flow and as soon as practicable after each wet weather discharge from points 9 and 10 commences and in any case not more than 12 hours after each discharge commences.

**Table 3- Noise Monitoring (Noise limits apply)**

EPL ID	Date	Start Time	Measurement Period	Measured Levels – dB(A) <small>L<sub>eq</sub> 15min Day</small>	Measured Levels – dB(A) <small>L<sub>eq</sub> 15min Evening</small>	Limit	Wind speed/ direction	Compliant (Yes/No)	Comments
13	-	-	90min	-		35 dB(A) Leq (15 min)	-	-	No monitoring
		-	30min		-		-	-	No monitoring
	-	-	90min	-			-	-	No monitoring
		-	30min		-		-	-	No monitoring
	-	-	90min	-			-	-	No monitoring
		-	30min		-		-	-	No monitoring
14	-	-	90min	-		35 dB(A) Leq (15 min)	-	-	No monitoring
		-	30min		-		-	-	No monitoring
	-	-	90min	-			-	-	No monitoring
		-	30min		-		-	-	No monitoring
	-	-	90min	-			-	-	No monitoring
		-	30min		-		-	-	No monitoring
15	-	-	90min	-		35 dB(A) Leq (15 min)	-	-	No monitoring
		-	30min		-		-	-	No monitoring
	-	-	90min	-			-	-	No monitoring
		-	30min		-		-	-	No monitoring
	-	-	90min	-			-	-	No monitoring
		-	30min		-		-	-	No monitoring
16		-	30min		-		-	-	No monitoring

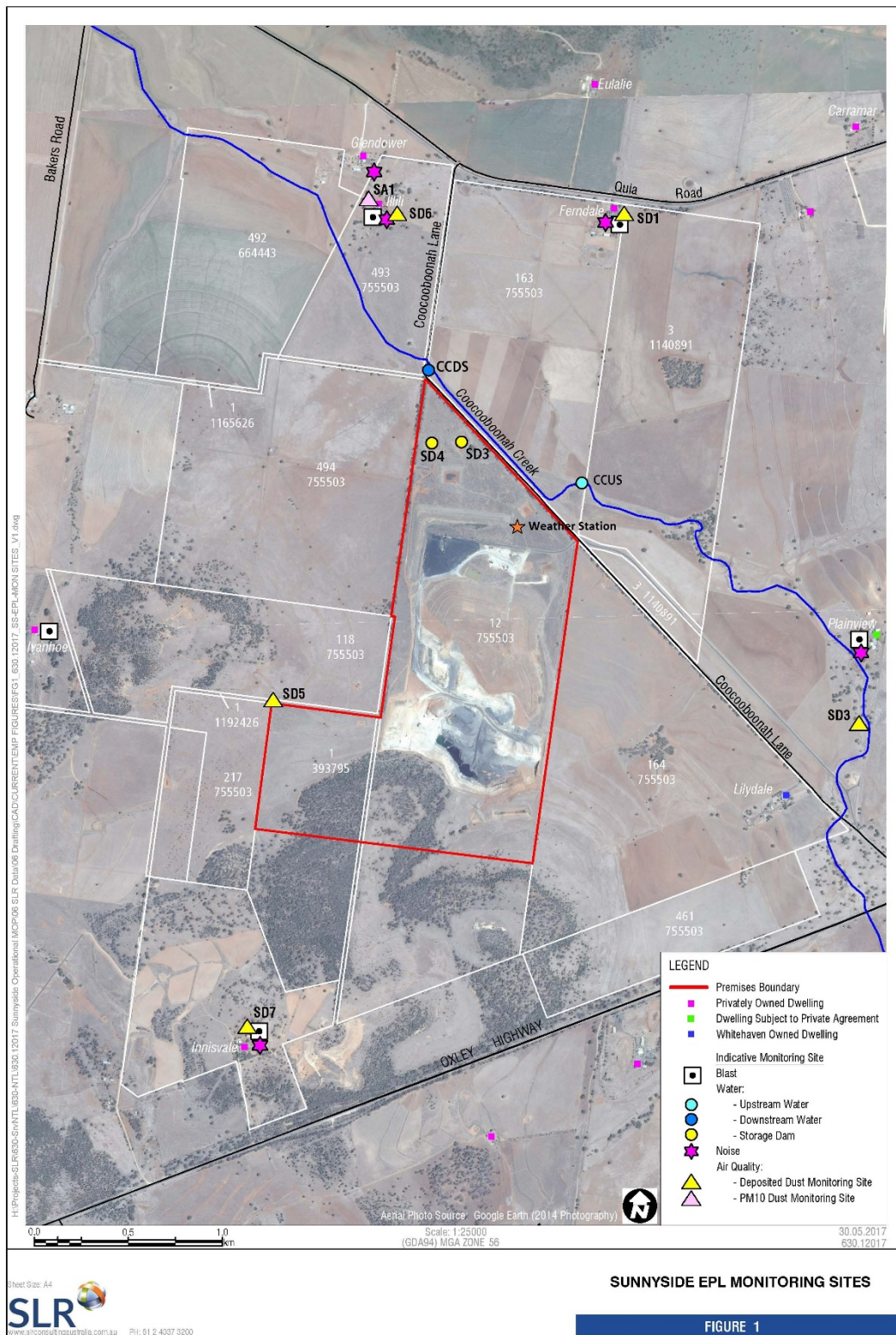
**SUNNYSIDE COAL MINE – MONTHLY MONITORING SUMMARY**

	-	-	90min	-		35 dB(A) Leq (15 min)	-	-	No monitoring
		-	30min		-		-	-	No monitoring
	-	-	90min	-			-	-	No monitoring
		-	30min		-		-	-	No monitoring
17	-	-	90min	-		35 dB(A) Leq (15 min)	-	-	No monitoring
			30min		-		-	-	No monitoring
	-	-	90min	-			-	-	No monitoring
			30min		-		-	-	No monitoring
	-	-	90min	-			-	-	No monitoring
			30min		-		-	-	No monitoring

**Table 4 – Monitoring (Blasts – Limits Apply)**

Location	Parameter	Units of Measure	Frequency	No. of Blasts for the Month	Average Value	Max or Only Value	100%ile Limit	(Potential) Non-compliance/breach
19	Blast Noise	dB (Lin Peak)	Every Blast	1	-	117.7	120	Yes
	Blast Vibration	mm/s			-	1.90	10	No
20	Blast Noise	dB (Lin Peak)	Every Blast	1	-	115.7	120	Yes
	Blast Vibration	mm/s			-	1.52	10	No
23	Blast Noise	dB (Lin Peak)	Every Blast	1	-	107.2	120	No
	Blast Vibration	mm/s			-	1.02	10	No
24	Blast Noise	dB (Lin Peak)	Every Blast	1	-	115.8	120	Yes
	Blast Vibration	mm/s			-	1.04	10	No

Figure 1 – EPL 12957 Monitoring Locations



## SUNNYSIDE COAL MINE – MONTHLY MONITORING SUMMARY

### Site Information

**EPL No:** 12957

**EPA Website Link:** <http://epa.nsw.gov.au/prpoeoapp/ViewPOEOLicence.aspx?DOCID=40292&SYSUID=1&LICID=12957>

**Licensee:** Namoi Mining Pty Ltd

**Licensee Address:** Sunnyside Coal Project, 259 Coocooboona Lane, GUNNEDAH NSW 2380

**EPL Monitoring Points:** See Figure 1 below

**Sampling Period:** June 2018

**Obtained Date:** 17<sup>th</sup> July 2018

**Publication Date:** 19<sup>th</sup> July 2018

**Table 1 - No Pollutant Limits Apply**

EPL ID	Pollutant	Units of Measure	Monitoring Frequency	No. of Samples for the Month	Date(s) Sampled	Date(s) Obtained	Min Value	Mean Value	Median Value	Max or Only Value
1	Particulates-Deposited Matter	g/m <sup>2</sup> /month	Continuous	1	19/06/18	27/06/18	-	-	-	1.5
2	Particulates-Deposited Matter	g/m <sup>2</sup> /month	Continuous	1	19/06/18	27/06/18	-	-	-	2.4
4	Particulates-Deposited Matter	g/m <sup>2</sup> /month	Continuous	1	19/06/18	27/06/18	-	-	-	2.8
5	Particulates-Deposited Matter	g/m <sup>2</sup> /month	Continuous	1	19/06/18	27/06/18	-	-	-	1.2
6	Particulates-Deposited Matter	g/m <sup>2</sup> /month	Continuous	1	19/06/18	27/06/18	-	-	-	0.6
7	PM <sub>10</sub>	µg/m <sup>3</sup>	Every 6 days	5	Various	13/07/18	3.4	12.4	13.5	20.2
9	Conductivity	µS/cm	Special Frequency 1*	-	-	-	-	-	-	-
	Total organic carbon	mg/L					-	-	-	-
10	Conductivity	µS/cm		-	-	-	-	-	-	-

## SUNNYSIDE COAL MINE – MONTHLY MONITORING SUMMARY

EPL ID	Pollutant	Units of Measure	Monitoring Frequency	No. of Samples for the Month	Date(s) Sampled	Date(s) Obtained	Min Value	Mean Value	Median Value	Max or Only Value
	Total organic carbon	mg/L	Special Frequency 1*				-	-	-	-
11	TSS	mg/L	Special Frequency 2**	-	-	-	-	-	-	-
	Conductivity	µS/cm		-			-	-	-	
	Oil & Grease	mg/L		-			-	-	-	
	pH	pH		-			-	-	-	
	Total organic carbon	mg/L		-			-	-	-	
12	TSS	mg/L	Special Frequency 2**	-	-	-	-	-	-	-
	Conductivity	µS /cm		-			-	-	-	
	Oil & Grease	mg/L		-			-	-	-	
	pH	pH		-			-	-	-	
	Total organic carbon	mg/L		-			-	-	-	

**Table 2 - Pollutant Limits Apply**

EPL ID	Pollutant	Units of Measure	Monitoring Frequency	No. of Samples for the Month	Date Sampled	Date Obtained	Min Value	Max Value	100%ile Limit	Exceedance (Yes/No)	Comments
9	TSS	mg/L	Special Frequency 1*	0	-	-	-	-	50	-	No discharge
	Oil & Grease	mg/L		0			-	-	10	-	No discharge
	pH	pH		0			-	-	6.5-8.5	-	No discharge
10	TSS	mg/L	Special Frequency 1*	0	-	-	-	-	50	-	No discharge
	Oil & Grease	mg/L		0			-	-	10	-	No discharge
	pH	pH		0			-	-	6.5-8.5	-	No discharge

\* Special Frequency 1 means the collection of samples as soon as practicable after each discharge commences and in any case not more than 12 hours after each discharge commences.

## SUNNYSIDE COAL MINE – MONTHLY MONITORING SUMMARY

\*\* Special Frequency 2 means collection of samples quarterly (in the event of flow during the quarter) at a time when there is flow and as soon as practicable after each wet weather discharge from points 9 and 10 commences and in any case not more than 12 hours after each discharge commences.

**Table 3- Noise Monitoring (Noise limits apply)**

EPL ID	Date	Start Time	Measurement Period	Measured Levels – dB(A)	Measured Levels – dB(A)	Limit	Wind speed/ direction	Compliant (Yes/No)	Comments
				L <sub>eq</sub> 15min Day	L <sub>eq</sub> 15min Evening				
13	19/06/18	11:00	90min	<30		35 dB(A) Leq (15 min)	8.3m/s, S/SE	Y	
		19:43	30min		IA		2.6m/s, ESE	Y	
	20/06/18	10:13	90min	IA			7m/s, E	Y	
		19:08	30min		IA		5m/s, SE	Y	
	21/06/18	10:39	90min	<30			4.1m/s ENE	Y	
		19:43	30min		IA		2.6m/s ESE	Y	
14	19/06/18	8:37	90min	<30		35 dB(A) Leq (15 min)	6.8m/s, S	Y	
		18:45	30min		IA		2m/s, SE	Y	
	20/06/18	8:33	90min	<30			6.5m/s, ESE	Y	
		18:21	30min		IA		2m/s, SE	Y	
	21/06/18	8:26	90min	38			5m/s, ESE	N	Haul trucks, reversing squawker and dozer audible
		18:05	30min		IA		2m/s, ESE	Y	
15	19/06/18	8:00	90min	30		35 dB(A) Leq (15 min)	6.8m/s, S	Y	
		18:47	30min		IA		2.6m/s, ESE	Y	
	20/06/18	8:30	90min	NM			7m/s, ESE	Y	
		20:27	30min		IA		3.2m/s, SE	Y	
	21/06/18	8:22	90min	37			5m/s, ESE	N	Haul trucks and dozer audible



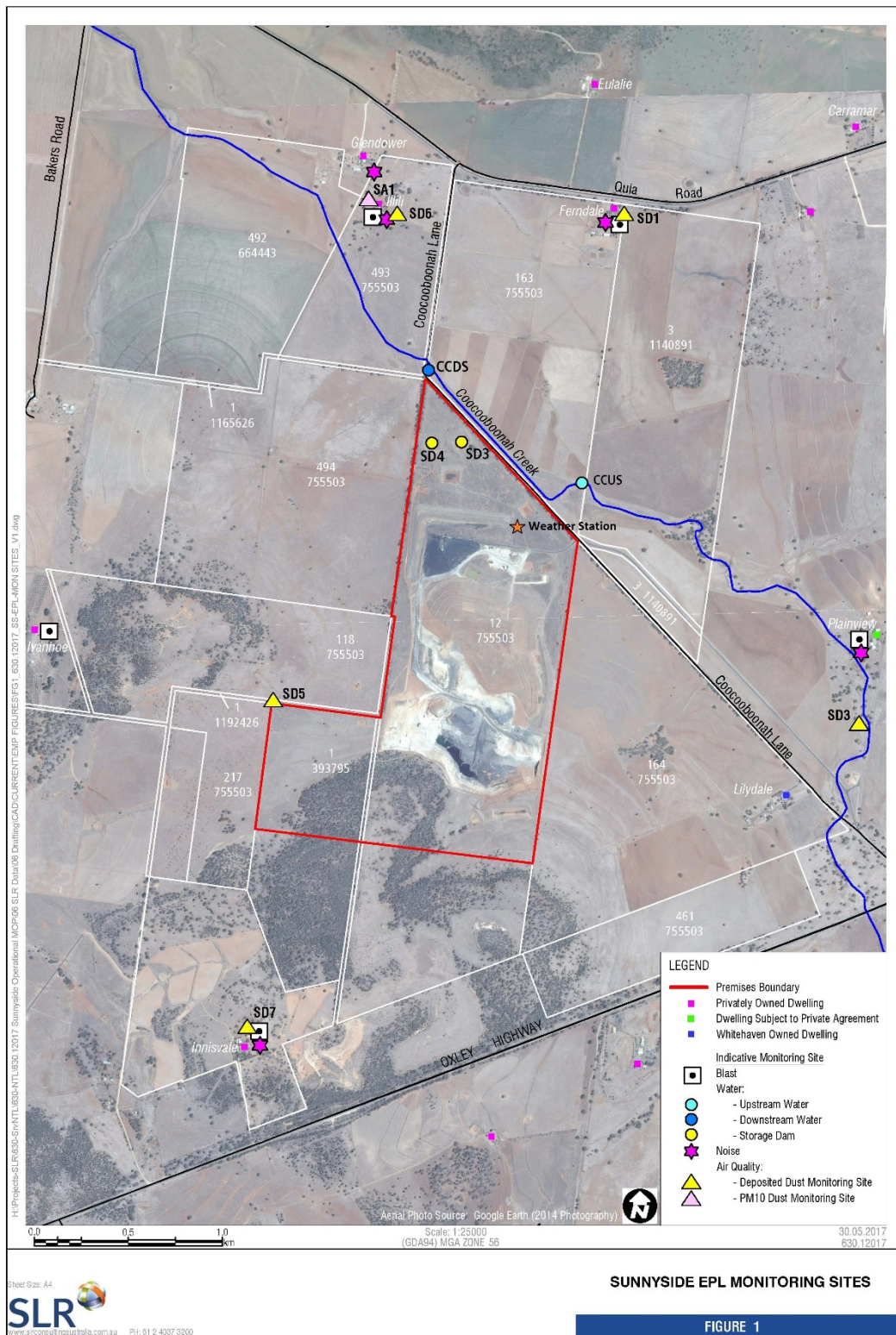
## SUNNYSIDE COAL MINE – MONTHLY MONITORING SUMMARY

		18:04	30min		IA		2.3m/s ESE	Y		
16	19/06/18	14:02	90min	IA		35 dB(A) Leq (15 min)	6.1m/s, SE	Y		
		20:58	30min		IA		5.2m/s, SSE	Y		
		12:33	90min	IA			4m/s, ESE	Y		
	20/06/18	19:08	30min		IA		5m/s, SE	Y		
		21/06/18	12:46	90min	IA			2.5m/s, ESE	Y	
			19:54	30 min			IA	2.5m/s, ESE	Y	
17	19/06/18	14:02	90min	IA		35 dB(A) Leq (15 min)	6.1m/s, SE	Y		
		19:57	30min		IA		5.2m/s, SSE	Y		
	20/06/18	10:41	90min	IA			7m/s, E	Y		
		19:30	30min		IA		5m/s, SE	Y		
	21/06/18	11:01	90min	IA			4m/s, ESE	Y		
		19:08	30min		IA		2.5m/s, ESE	Y		

**Table 4 – Monitoring (Blasts – Limits Apply)**

Location	Parameter	Units of Measure	Frequency	No. of Blasts for the Month	Average Value	Max or Only Value	100%ile Limit	(Potential) Non-compliance/breach
19	Blast Noise	dB (Lin Peak)	Every Blast	1	-	110.3	120	No
	Blast Vibration	mm/s			-	0.39	10	No
20	Blast Noise	dB (Lin Peak)	Every Blast	1	-	108.4	120	No
	Blast Vibration	mm/s			-	0.59	10	No
23	Blast Noise	dB (Lin Peak)	Every Blast	1	-	106.0	120	No
	Blast Vibration	mm/s			-	0.24	10	No
24	Blast Noise	dB (Lin Peak)	Every Blast	1	-	110.3	120	No
	Blast Vibration	mm/s			-	0.21	10	No

Figure 1 – EPL 12957 Monitoring Locations



## SUNNYSIDE COAL MINE – MONTHLY MONITORING SUMMARY

### Site Information

**EPL No:** 12957

**EPA Website Link:** <http://epa.nsw.gov.au/prpoeoapp/ViewPOEOLicence.aspx?DOCID=40292&SYSUID=1&LICID=12957>

**Licensee:** Namoi Mining Pty Ltd

**Licensee Address:** Sunnyside Coal Project, 259 Coocooboona Lane, GUNNEDAH NSW 2380

**EPL Monitoring Points:** See Figure 1 below

**Sampling Period:** July 2018

**Obtained Date:** 16<sup>th</sup> August 2018

**Publication Date:** 17<sup>th</sup> August 2018

**Table 1 - No Pollutant Limits Apply**

EPL ID	Pollutant	Units of Measure	Monitoring Frequency	No. of Samples for the Month	Date(s) Sampled	Date(s) Obtained	Min Value	Mean Value	Median Value	Max or Only Value
1	Particulates-Deposited Matter	g/m <sup>2</sup> /month	Continuous	1	19/07/18	24/07/18	-	-	-	1.15
2	Particulates-Deposited Matter	g/m <sup>2</sup> /month	Continuous	1	19/07/18	24/07/18	-	-	-	0.78
4	Particulates-Deposited Matter	g/m <sup>2</sup> /month	Continuous	1	19/07/18	24/04/18	-	-	-	2.17
5	Particulates-Deposited Matter	g/m <sup>2</sup> /month	Continuous	1	19/07/18	24/04/18	-	-	-	0.83
6	Particulates-Deposited Matter	g/m <sup>2</sup> /month	Continuous	1	19/07/18	24/04/18	-	-	-	0.84
7	PM <sub>10</sub>	µg/m <sup>3</sup>	Every 6 days	5	Various	16/08/18	15.6	20.5	20.2	29.0
9	Conductivity	µS/cm	Special Frequency 1*	-	-	-	-	-	-	-
	Total organic carbon	mg/L					-	-	-	-
10	Conductivity	µS/cm		-	-	-	-	-	-	-

## SUNNYSIDE COAL MINE – MONTHLY MONITORING SUMMARY

EPL ID	Pollutant	Units of Measure	Monitoring Frequency	No. of Samples for the Month	Date(s) Sampled	Date(s) Obtained	Min Value	Mean Value	Median Value	Max or Only Value
	Total organic carbon	mg/L	Special Frequency 1*				-	-	-	-
11	TSS	mg/L	Special Frequency 2**	-	-	-	-	-	-	-
	Conductivity	µS/cm		-			-	-	-	
	Oil & Grease	mg/L		-			-	-	-	
	pH	pH		-			-	-	-	
	Total organic carbon	mg/L		-			-	-	-	
12	TSS	mg/L	Special Frequency 2**	-	-	-	-	-	-	-
	Conductivity	µS /cm		-			-	-	-	
	Oil & Grease	mg/L		-			-	-	-	
	pH	pH		-			-	-	-	
	Total organic carbon	mg/L		-			-	-	-	

**Table 2 - Pollutant Limits Apply**

EPL ID	Pollutant	Units of Measure	Monitoring Frequency	No. of Samples for the Month	Date Sampled	Date Obtained	Min Value	Max Value	100%ile Limit	Exceedance (Yes/No)	Comments
9	TSS	mg/L	Special Frequency 1*	0	-	-	-	-	50	-	No discharge
	Oil & Grease	mg/L		0			-	-	10	-	No discharge
	pH	pH		0			-	-	6.5-8.5	-	No discharge
10	TSS	mg/L	Special Frequency 1*	0	-	-	-	-	50	-	No discharge
	Oil & Grease	mg/L		0			-	-	10	-	No discharge
	pH	pH		0			-	-	6.5-8.5	-	No discharge

\* Special Frequency 1 means the collection of samples as soon as practicable after each discharge commences and in any case not more than 12 hours after each discharge commences.

## SUNNYSIDE COAL MINE – MONTHLY MONITORING SUMMARY

\*\* Special Frequency 2 means collection of samples quarterly (in the event of flow during the quarter) at a time when there is flow and as soon as practicable after each wet weather discharge from points 9 and 10 commences and in any case not more than 12 hours after each discharge commences.

**Table 3- Noise Monitoring (Noise limits apply)**

EPL ID	Date	Start Time	Measurement Period	Measured Levels – dB(A)	Measured Levels – dB(A)	Limit	Wind speed/ direction	Compliant (Yes/No)	Comments
				L <sub>eq</sub> 15min Day	L <sub>eq</sub> 15min Evening				
13			90min			35 dB(A) Leq (15 min)			
			30min						
			90min						
			30min						
			90min						
			30min						
14			90min			35 dB(A) Leq (15 min)			
			30min						
			90min						
			30min						
			90min						
			30min						
15			90min			35 dB(A) Leq (15 min)			
			30min						
			90min						
			30min						
			90min						
			30min						
16			90min						

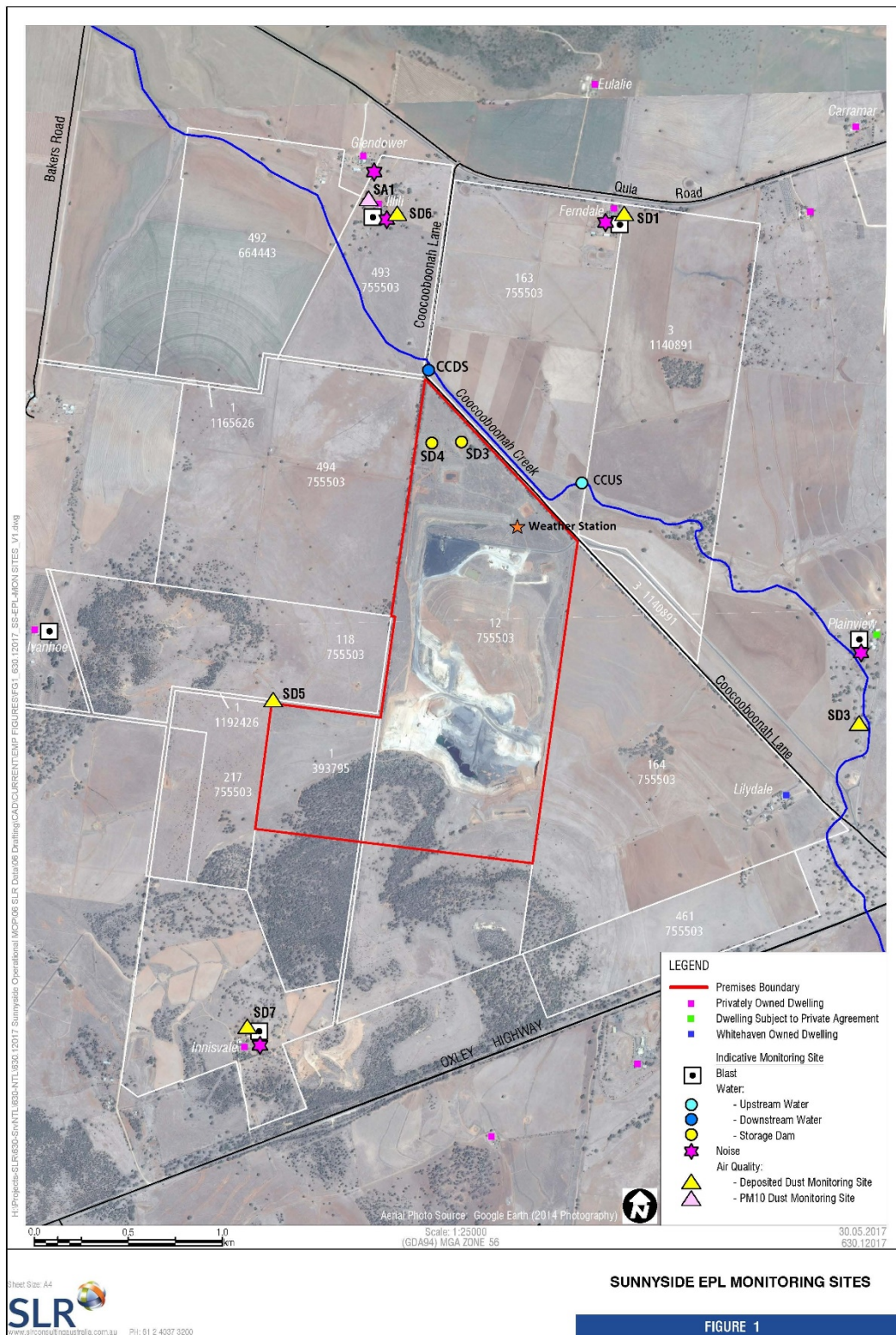
**SUNNYSIDE COAL MINE – MONTHLY MONITORING SUMMARY**

		30min		35 dB(A) Leq (15 min)			
		90min					
		30min					
		90min					
		30 min					
17		90min		35 dB(A) Leq (15 min)			
		30min					
		90min					
		30min					
		90min					
		30min					

**Table 4 – Monitoring (Blasts – Limits Apply)**

Location	Parameter	Units of Measure	Frequency	No. of Blasts for the Month	Average Value	Max or Only Value	100%ile Limit	(Potential) Non-compliance/breach
19	Blast Noise	dB (Lin Peak)	Every Blast	3	104.2	107.7	120	No
	Blast Vibration	mm/s			0.5	1.0	10	No
20	Blast Noise	dB (Lin Peak)	Every Blast	3	101.3	104.9	120	No
	Blast Vibration	mm/s			0.3	0.6	10	No
23	Blast Noise	dB (Lin Peak)	Every Blast	3	105.3	109.5	120	No
	Blast Vibration	mm/s			0.2	0.3	10	No
24	Blast Noise	dB (Lin Peak)	Every Blast	3	101.7	104.4	120	No
	Blast Vibration	mm/s			0.3	0.6	10	No

Figure 1 – EPL 12957 Monitoring Locations





## SUNNYSIDE COAL MINE – MONTHLY MONITORING SUMMARY

### Site Information

**EPL No:** 12957

**EPA Website Link:** <http://epa.nsw.gov.au/prpoeoapp/ViewPOEOLicence.aspx?DOCID=40292&SYSUID=1&LICID=12957>

**Licensee:** Namoi Mining Pty Ltd

**Licensee Address:** Sunnyside Coal Project, 259 Coocooboona Lane, GUNNEDAH NSW 2380

**EPL Monitoring Points:** See Figure 1 below

**Sampling Period:** August 2018

**Obtained Date:** 7<sup>th</sup> September 2018

**Publication Date:** 12<sup>th</sup> September 2018

**Table 1 - No Pollutant Limits Apply**

EPL ID	Pollutant	Units of Measure	Monitoring Frequency	No. of Samples for the Month	Date(s) Sampled	Date(s) Obtained	Min Value	Mean Value	Median Value	Max or Only Value
1	Particulates-Deposited Matter	g/m <sup>2</sup> /month	Continuous	1	27/08/18	30/08/18	-	-	-	1.2
2	Particulates-Deposited Matter	g/m <sup>2</sup> /month	Continuous	1	27/08/18	30/08/18	-	-	-	0.9
4	Particulates-Deposited Matter	g/m <sup>2</sup> /month	Continuous	1	27/08/18	30/08/18	-	-	-	1.0
5	Particulates-Deposited Matter	g/m <sup>2</sup> /month	Continuous	1	27/08/18	30/08/18	-	-	-	5.3
6	Particulates-Deposited Matter	g/m <sup>2</sup> /month	Continuous	1	27/08/18	30/08/18	-	-	-	1.3
7	PM <sub>10</sub>	µg/m <sup>3</sup>	Every 6 days	3	Various	07/09/18	7.1	21.5	28.6	28.8
9	Conductivity	µS/cm	Special Frequency 1*	-	-	-	-	-	-	-
	Total organic carbon	mg/L					-	-	-	-
10	Conductivity	µS/cm		-	-	-	-	-	-	-



## SUNNYSIDE COAL MINE – MONTHLY MONITORING SUMMARY

EPL ID	Pollutant	Units of Measure	Monitoring Frequency	No. of Samples for the Month	Date(s) Sampled	Date(s) Obtained	Min Value	Mean Value	Median Value	Max or Only Value
	Total organic carbon	mg/L	Special Frequency 1*				-	-	-	-
11	TSS	mg/L	Special Frequency 2**	-	-	-	-	-	-	-
	Conductivity	µS/cm		-			-	-	-	
	Oil & Grease	mg/L		-			-	-	-	
	pH	pH		-			-	-	-	
	Total organic carbon	mg/L		-			-	-	-	
12	TSS	mg/L	Special Frequency 2**	-	-	-	-	-	-	-
	Conductivity	µS /cm		-			-	-	-	
	Oil & Grease	mg/L		-			-	-	-	
	pH	pH		-			-	-	-	
	Total organic carbon	mg/L		-			-	-	-	

**Table 2 - Pollutant Limits Apply**

EPL ID	Pollutant	Units of Measure	Monitoring Frequency	No. of Samples for the Month	Date Sampled	Date Obtained	Min Value	Max Value	100%ile Limit	Exceedance (Yes/No)	Comments
9	TSS	mg/L	Special Frequency 1*	0	-	-	-	-	50	-	No discharge
	Oil & Grease	mg/L		0			-	-	10	-	No discharge
	pH	pH		0			-	-	6.5-8.5	-	No discharge
10	TSS	mg/L	Special Frequency 1*	0	-	-	-	-	50	-	No discharge
	Oil & Grease	mg/L		0			-	-	10	-	No discharge
	pH	pH		0			-	-	6.5-8.5	-	No discharge

\* Special Frequency 1 means the collection of samples as soon as practicable after each discharge commences and in any case not more than 12 hours after each discharge commences.

## SUNNYSIDE COAL MINE – MONTHLY MONITORING SUMMARY

\*\* Special Frequency 2 means collection of samples quarterly (in the event of flow during the quarter) at a time when there is flow and as soon as practicable after each wet weather discharge from points 9 and 10 commences and in any case not more than 12 hours after each discharge commences.

**Table 3- Noise Monitoring (Noise limits apply)**

EPL ID	Date	Start Time	Measurement Period	Measured Levels – dB(A)	Measured Levels – dB(A)	Limit	Wind speed/ direction	Compliant (Yes/No)	Comments
				L <sub>eq</sub> 15min Day	L <sub>eq</sub> 15min Evening				
13	-		90min			35 dB(A) Leq (15 min)			
			30min						
			90min						
			30min						
			90min						
			30min						
14			90min			35 dB(A) Leq (15 min)			
			30min						
			90min						
			30min						
			90min						
			30min						
15			90min			35 dB(A) Leq (15 min)			
			30min						
			90min						
			30min						
			90min						
			30min						
16			90min						

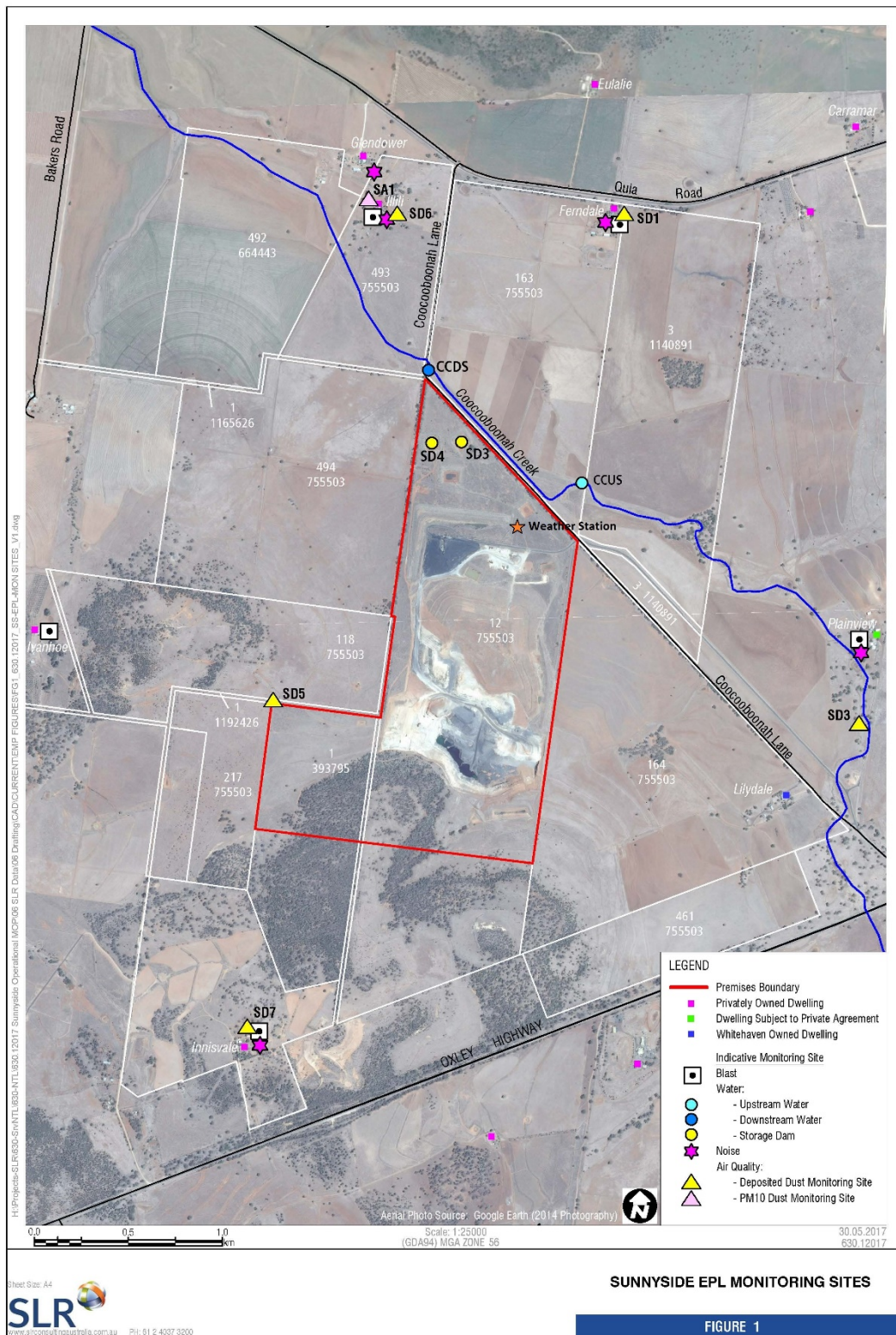
## SUNNYSIDE COAL MINE – MONTHLY MONITORING SUMMARY

17		30min		35 dB(A) Leq (15 min)			
		90min					
		30min					
		90min					
		30 min					
		90min		35 dB(A) Leq (15 min)			
		30min					
		90min					
		30min					
		90min					
		30min					

**Table 4 – Monitoring (Blasts – Limits Apply)**

Location	Parameter	Units of Measure	Frequency	No. of Blasts for the Month	Average Value	Max or Only Value	100%ile Limit	(Potential) Non-compliance/breach
19	Blast Noise	dB (Lin Peak)	Every Blast	1	104.1	104.1	120	No
	Blast Vibration	mm/s			0.31	0.31	10	No
20	Blast Noise	dB (Lin Peak)	Every Blast	1	103.7	103.7	120	No
	Blast Vibration	mm/s			0.61	0.61	10	No
23	Blast Noise	dB (Lin Peak)	Every Blast	1	102.6	102.6	120	No
	Blast Vibration	mm/s			0.71	0.71	10	No
24	Blast Noise	dB (Lin Peak)	Every Blast	1	103.0	103.0	120	No
	Blast Vibration	mm/s			0.61	0.61	10	No
26	Blast Noise	dB (Lin Peak)	Every Blast		0.99	0.99	120	No
	Blast Vibration	mm/s			108	108	10	No

Figure 1 – EPL 12957 Monitoring Locations





## SUNNYSIDE COAL MINE – MONTHLY MONITORING SUMMARY

### Site Information

**EPL No:** 12957

**EPA Website Link:** <http://epa.nsw.gov.au/prpoeoapp/ViewPOEOLicence.aspx?DOCID=40292&SYSUID=1&LICID=12957>

**Licensee:** Namoi Mining Pty Ltd

**Licensee Address:** Sunnyside Coal Project, 259 Coocooboona Lane, GUNNEDAH NSW 2380

**EPL Monitoring Points:** See Figure 1 below

**Sampling Period:** September 2018

**Obtained Date:** 10<sup>th</sup> October 2018

**Publication Date:** 10<sup>th</sup> October 2018

**Table 1 - No Pollutant Limits Apply**

EPL ID	Pollutant	Units of Measure	Monitoring Frequency	No. of Samples for the Month	Date(s) Sampled	Date(s) Obtained	Min Value	Mean Value	Median Value	Max or Only Value
1	Particulates-Deposited Matter	g/m <sup>2</sup> /month	Continuous	1	18/09/2018	27/09/2018	-	-	-	20.6
2	Particulates-Deposited Matter	g/m <sup>2</sup> /month	Continuous	1	18/09/2018	27/09/2018	-	-	-	3.2
4	Particulates-Deposited Matter	g/m <sup>2</sup> /month	Continuous	1	18/09/2018	27/09/2018	-	-	-	1.6
5	Particulates-Deposited Matter	g/m <sup>2</sup> /month	Continuous	1	18/09/2018	27/09/2018	-	-	-	2.4
6	Particulates-Deposited Matter	g/m <sup>2</sup> /month	Continuous	1	18/09/2018	27/09/2018	-	-	-	1.4
7	PM <sub>10</sub>	µg/m <sup>3</sup>	Every 6 days	3	Various	05/10/2018	7.2	13.67	17.8	28.8
9	Conductivity	µS/cm	Special Frequency 1*	-	-	-	-	-	-	-
	Total organic carbon	mg/L					-	-	-	-
10	Conductivity	µS/cm		-	-	-	-	-	-	-

## SUNNYSIDE COAL MINE – MONTHLY MONITORING SUMMARY

EPL ID	Pollutant	Units of Measure	Monitoring Frequency	No. of Samples for the Month	Date(s) Sampled	Date(s) Obtained	Min Value	Mean Value	Median Value	Max or Only Value
	Total organic carbon	mg/L	Special Frequency 1*				-	-	-	-
11	TSS	mg/L	Special Frequency 2**	-	-	-	-	-	-	-
	Conductivity	µS/cm		-			-	-	-	
	Oil & Grease	mg/L		-			-	-	-	
	pH	pH		-			-	-	-	
	Total organic carbon	mg/L		-			-	-	-	
12	TSS	mg/L	Special Frequency 2**	-	-	-	-	-	-	-
	Conductivity	µS /cm		-			-	-	-	
	Oil & Grease	mg/L		-			-	-	-	
	pH	pH		-			-	-	-	
	Total organic carbon	mg/L		-			-	-	-	

**Table 2 - Pollutant Limits Apply**

EPL ID	Pollutant	Units of Measure	Monitoring Frequency	No. of Samples for the Month	Date Sampled	Date Obtained	Min Value	Max Value	100%ile Limit	Exceedance (Yes/No)	Comments
9	TSS	mg/L	Special Frequency 1*	0	-	-	-	-	50	-	No discharge
	Oil & Grease	mg/L		0			-	-	10	-	No discharge
	pH	pH		0			-	-	6.5-8.5	-	No discharge
10	TSS	mg/L	Special Frequency 1*	0	-	-	-	-	50	-	No discharge
	Oil & Grease	mg/L		0			-	-	10	-	No discharge
	pH	pH		0			-	-	6.5-8.5	-	No discharge

\* Special Frequency 1 means the collection of samples as soon as practicable after each discharge commences and in any case not more than 12 hours after each discharge commences.

## SUNNYSIDE COAL MINE – MONTHLY MONITORING SUMMARY

\*\* Special Frequency 2 means collection of samples quarterly (in the event of flow during the quarter) at a time when there is flow and as soon as practicable after each wet weather discharge from points 9 and 10 commences and in any case not more than 12 hours after each discharge commences.

**Table 3- Noise Monitoring (Noise limits apply)**

EPL ID	Date	Start Time	Measurement Period	Measured Levels – dB(A)	Measured Levels – dB(A)	Limit	Wind speed/ direction	Compliant (Yes/No)	Comments	
				L <sub>eq</sub> 15min Day	L <sub>eq</sub> 15min Evening					
13	10/09/2018	09:45	90min	I/A		35 dB(A) Leq (15 min)	4.8 m/s NE/ENE	Y	I/A = inaudible	
		18:36	30min		I/A		2.3 m/s SE	Y		
	11/09/2018	09:22	90min	I/A			3.4 m/s N-NW	Y		
		18:07	30min		I/A		0.3 m/s NW-SE	Y		
	12/09/2018	09:15	90min	I/A			4.2 m/s NW	Y		
		18:09	30min		I/A		0.9m/s NW-SW	Y		
14	10/09/2018	11:31	90min	30		35 dB(A) Leq (15 min)	3.3 m/s E	Y		
		19:53	30min		I/A		3.8 m/s SE	Y		
	11/09/2018	11:06	90min	I/A			2.8 m/s W	Y		
		19:55	30min		I/A		2.5 m/s ESE	Y		
	12/09/2018	11:16	90min	I/A			6.3 m/s NW	Y		
		19:40	30min		I/A		2.2 m/s SE	Y		
15	10/09/2018	11:35	90min	28		35 dB(A) Leq (15 min)	3.3 m/s E	Y		
		18:51	30min		I/A		2.2 m/s SSE	Y		
	11/09/2018	11:16	90min	I/A			2.8 m/s W-NW	Y		
		18:49	30min		I/A		1.3 m/s SSE	Y		
	12/09/2018	11:03	90min	N/M			6.3 m/s NE	Y		N/M = not measurable
		18:50	30min		I/A		0.5 m/s SW-E	Y		
16	10/09/2018	7:38	90min	I/A			1.2 m/s E-NNW	Y		

**SUNNYSIDE COAL MINE – MONTHLY MONITORING SUMMARY**

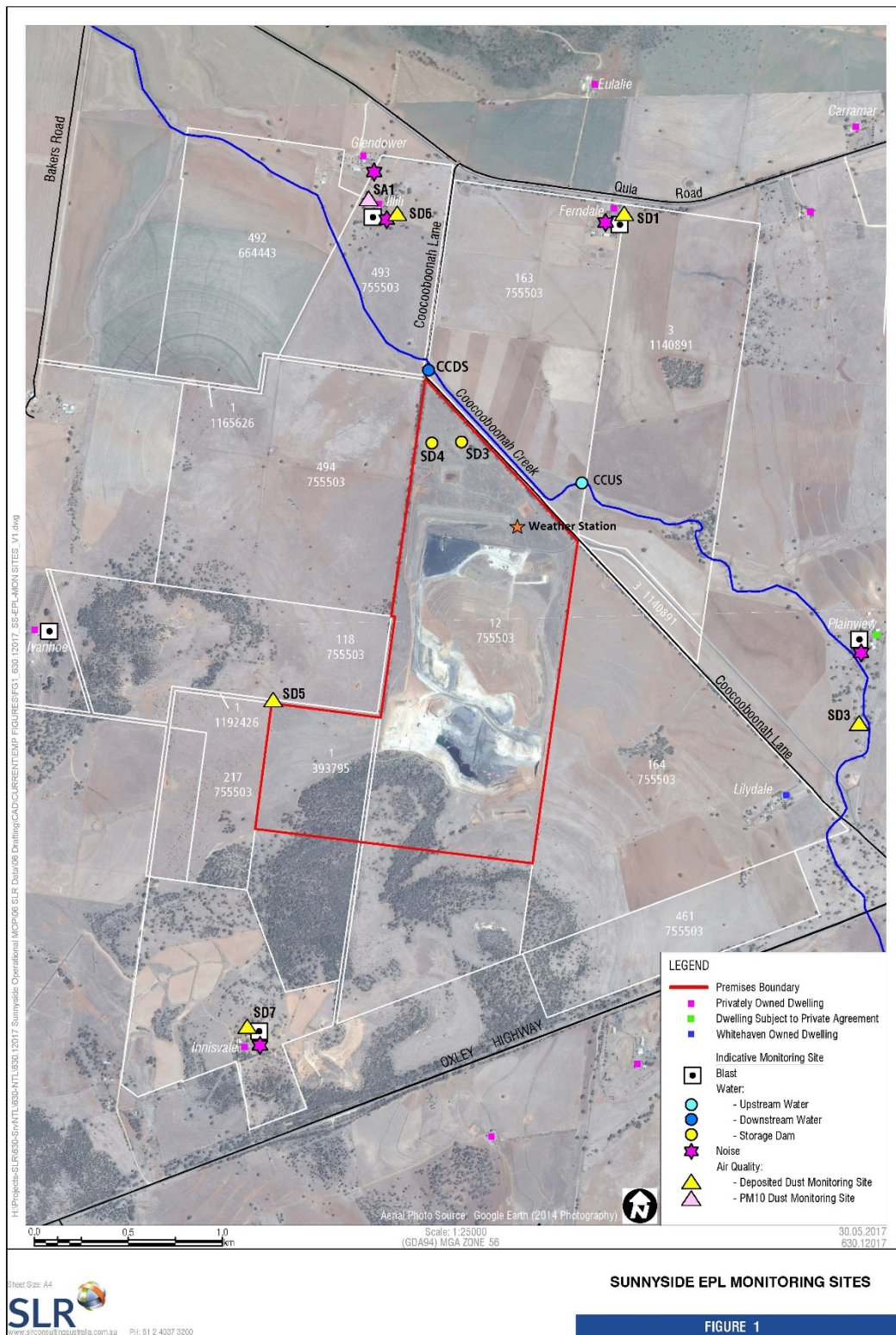
	11/09/2018	19:50	30min		I/A	35 dB(A) Leq (15 min)	3.8 m/s E-SE	Y	Haul truck & dozer operations	
		07:23	90min	34			3.9 m/s E-N	Y		
		19:47	30min		I/A		2.5 m/s ESE	Y		
	12/09/2018	07:18	90min	30				1.9 m/s N	Y	
		19:42	30 min		I/A			2.2 m/s E	Y	
17	10/09/2018	09:31	90min	<25		35 dB(A) Leq (15 min)	4.8 m/s NE/ENE	Y		
		19:09	30min		I/A		2.6 m/s SSE	Y		
	11/09/2018	09:12	90min	<25			3.4 m/s W	Y		
		19:11	30min		I/A		2.1 m/s SE	Y		
	12/09/2018	09:23	90min	31			4.2 m/s NW	Y		
		18:56	30min		I/A		1.1 m/s SE	Y		

**Table 4 – Monitoring (Blasts – Limits Apply)**

Location	Parameter	Units of Measure	Frequency	No. of Blasts for the Month	Average Value	Max or Only Value	100%ile Limit	(Potential) Non-compliance/breach
19	Blast Noise	dB (Lin Peak)	Every Blast	2	102.3	104	120	No
	Blast Vibration	mm/s			0.59	0.31	10	No
20	Blast Noise	dB (Lin Peak)	Every Blast	2	104.3	105	120	No
	Blast Vibration	mm/s			0.35	0.48	10	No
23	Blast Noise	dB (Lin Peak)	Every Blast	2	101.8	105.7	120	No
	Blast Vibration	mm/s			0.28	0.4	10	No
24	Blast Noise	dB (Lin Peak)	Every Blast	2	109.3	109.6	120	No
	Blast Vibration	mm/s			0.31	0.41	10	No
26	Blast Noise	dB (Lin Peak)	Every Blast	2	102.3	104	120	No
	Blast Vibration	mm/s			0.59	0.8	10	No



Figure 1 – EPL 12957 Monitoring Locations



**SUNNYSIDE COAL MINE – MONTHLY MONITORING SUMMARY**
**Site Information**
**EPL No:** 12957

**EPA Website Link:** <http://epa.nsw.gov.au/prpoeoapp/ViewPOEOLicence.aspx?DOCID=40292&SYSUID=1&LICID=12957>
**Licensee:** Namoi Mining Pty Ltd

**Licensee Address:** Sunnyside Coal Project, 259 Coocooboona Lane, GUNNEDAH NSW 2380

**EPL Monitoring Points:** See Figure 1 below

**Sampling Period:** October 2018

**Obtained Date:** 07<sup>th</sup> November 2018

**Publication Date:** 08<sup>th</sup> November 2018

**Table 1 - No Pollutant Limits Apply**

EPL ID	Pollutant	Units of Measure	Monitoring Frequency	No. of Samples for the Month	Date(s) Sampled	Date(s) Obtained	Min Value	Mean Value	Median Value	Max or Only Value
1	Particulates-Deposited Matter	g/m <sup>2</sup> /month	Continuous	1	18/09/2018	27/09/2018	-	-	-	3.6
2	Particulates-Deposited Matter	g/m <sup>2</sup> /month	Continuous	1	18/09/2018	27/09/2018	-	-	-	2.0
4	Particulates-Deposited Matter	g/m <sup>2</sup> /month	Continuous	1	18/09/2018	27/09/2018	-	-	-	1.7
5	Particulates-Deposited Matter	g/m <sup>2</sup> /month	Continuous	1	18/09/2018	27/09/2018	-	-	-	1
6	Particulates-Deposited Matter	g/m <sup>2</sup> /month	Continuous	1	18/09/2018	27/09/2018	-	-	-	1.4
7	PM <sub>10</sub>	µg/m <sup>3</sup>	Every 6 days	3	Various	05/10/2018	8.2	12.8	14.15	15.4
9	Conductivity	µS/cm	Special Frequency 1*	-	-	-	-	-	-	-
	Total organic carbon	mg/L					-	-	-	-
10	Conductivity	µS/cm		-	-	-	-	-	-	-

## SUNNYSIDE COAL MINE – MONTHLY MONITORING SUMMARY

EPL ID	Pollutant	Units of Measure	Monitoring Frequency	No. of Samples for the Month	Date(s) Sampled	Date(s) Obtained	Min Value	Mean Value	Median Value	Max or Only Value
	Total organic carbon	mg/L	Special Frequency 1*				-	-	-	-
11	TSS	mg/L	Special Frequency 2**	-	-	-	-	-	-	-
	Conductivity	µS/cm		-			-	-	-	
	Oil & Grease	mg/L		-			-	-	-	
	pH	pH		-			-	-	-	
	Total organic carbon	mg/L		-			-	-	-	
12	TSS	mg/L	Special Frequency 2**	-	-	-	-	-	-	-
	Conductivity	µS /cm		-			-	-	-	
	Oil & Grease	mg/L		-			-	-	-	
	pH	pH		-			-	-	-	
	Total organic carbon	mg/L		-			-	-	-	

**Table 2 - Pollutant Limits Apply**

EPL ID	Pollutant	Units of Measure	Monitoring Frequency	No. of Samples for the Month	Date Sampled	Date Obtained	Min Value	Max Value	100%ile Limit	Exceedance (Yes/No)	Comments
9	TSS	mg/L	Special Frequency 1*	0	-	-	-	-	50	-	No discharge
	Oil & Grease	mg/L		0			-	-	10	-	No discharge
	pH	pH		0			-	-	6.5-8.5	-	No discharge
10	TSS	mg/L	Special Frequency 1*	0	-	-	-	-	50	-	No discharge
	Oil & Grease	mg/L		0			-	-	10	-	No discharge
	pH	pH		0			-	-	6.5-8.5	-	No discharge

\* Special Frequency 1 means the collection of samples as soon as practicable after each discharge commences and in any case not more than 12 hours after each discharge commences.



## SUNNYSIDE COAL MINE – MONTHLY MONITORING SUMMARY

\*\* Special Frequency 2 means collection of samples quarterly (in the event of flow during the quarter) at a time when there is flow and as soon as practicable after each wet weather discharge from points 9 and 10 commences and in any case not more than 12 hours after each discharge commences.

**Table 3- Noise Monitoring (Noise limits apply)**

EPL ID	Date	Start Time	Measurement Period	Measured Levels – dB(A)	Measured Levels – dB(A)	Limit	Wind speed/ direction	Compliant (Yes/No)	Comments
				Leq 15min Day	Leq 15min Evening				
13						35 dB(A) Leq (15 min)			
14						35 dB(A) Leq (15 min)			
15						35 dB(A) Leq (15 min)			
16									

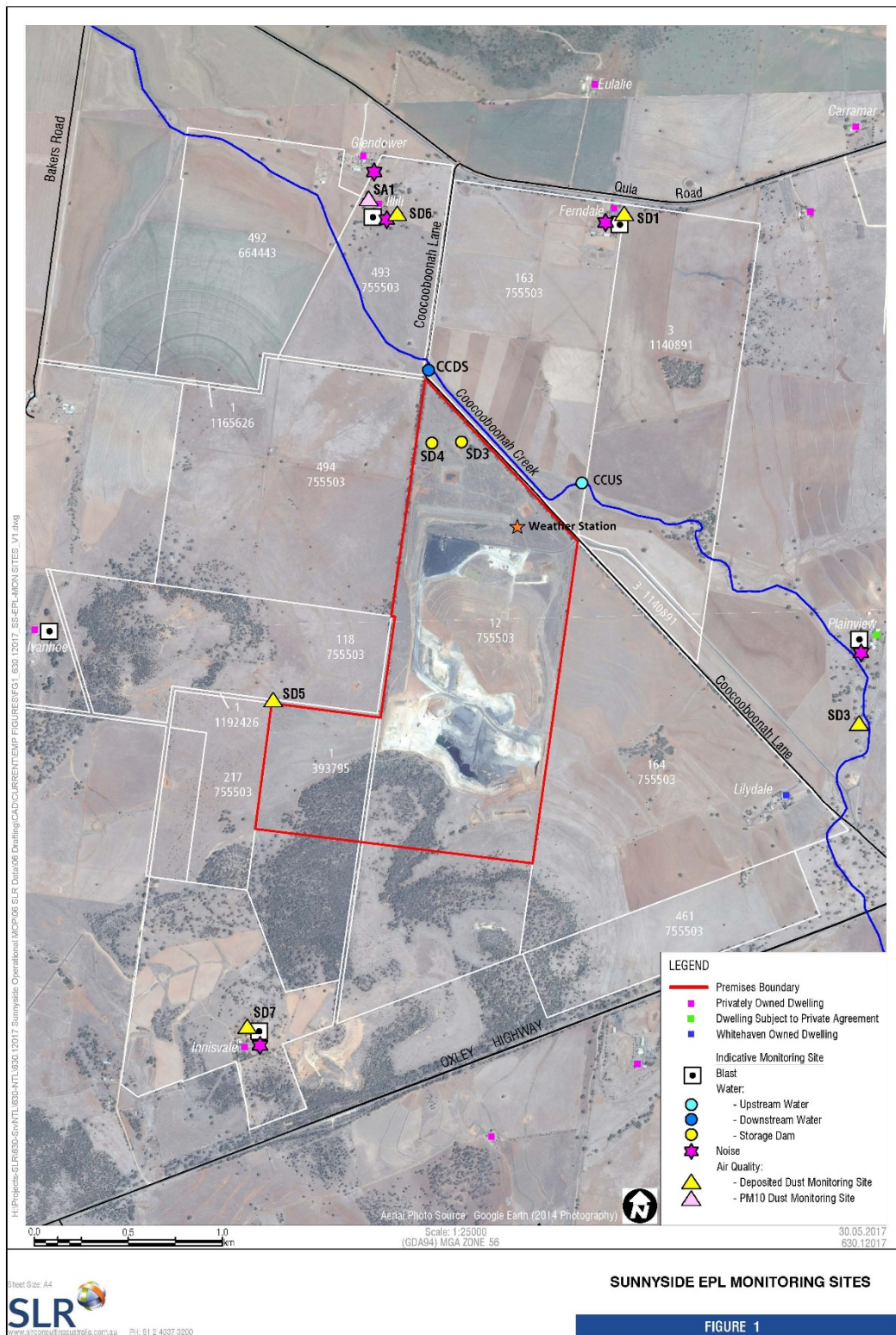
## SUNNYSIDE COAL MINE – MONTHLY MONITORING SUMMARY

						35 dB(A) Leq (15 min)			
17						35 dB(A) Leq (15 min)			

**Table 4 – Monitoring (Blasts – Limits Apply)**

Location	Parameter	Units of Measure	Frequency	No. of Blasts for the Month	Average Value	Max or Only Value	100%ile Limit	(Potential) Non-compliance/breach
19	Blast Noise	dB (Lin Peak)	Every Blast	1		99.5	120	No
	Blast Vibration	mm/s			0.04	10	No	
20	Blast Noise	dB (Lin Peak)	Every Blast	1		99.2	120	No
	Blast Vibration	mm/s			0.02	10	No	
23	Blast Noise	dB (Lin Peak)	Every Blast	1		101.4	120	No
	Blast Vibration	mm/s			0.05	10	No	
24	Blast Noise	dB (Lin Peak)	Every Blast	1		101.2	120	No
	Blast Vibration	mm/s			0.04	10	No	
26	Blast Noise	dB (Lin Peak)	Every Blast	1		99.1	120	No
	Blast Vibration	mm/s			0.8	10	No	

Figure 1 – EPL 12957 Monitoring Locations



## SUNNYSIDE COAL MINE – MONTHLY MONITORING SUMMARY

### Site Information

**EPL No:** 12957

**EPA Website Link:** <http://epa.nsw.gov.au/prpoeoapp/ViewPOEOLicence.aspx?DOCID=40292&SYSUID=1&LICID=12957>

**Licensee:** Namoi Mining Pty Ltd

**Licensee Address:** Sunnyside Coal Project, 259 Coocooboona Lane, GUNNEDAH NSW 2380

**EPL Monitoring Points:** See Figure 1 below

**Sampling Period:** November 2018

**Obtained Date:** 06<sup>th</sup> December 2018

**Publication Date:** 06<sup>th</sup> December 2018

**Table 1 - No Pollutant Limits Apply**

EPL ID	Pollutant	Units of Measure	Monitoring Frequency	No. of Samples for the Month	Date(s) Sampled	Date(s) Obtained	Min Value	Mean Value	Median Value	Max or Only Value
1	Particulates-Deposited Matter	g/m <sup>2</sup> /month	Continuous	1	18/10/18	16/11/18	-	-	-	3.7
2	Particulates-Deposited Matter	g/m <sup>2</sup> /month	Continuous	1	18/10/18	16/11/18	-	-	-	7.8
4	Particulates-Deposited Matter	g/m <sup>2</sup> /month	Continuous	1	18/10/18	16/11/18	-	-	-	1.5
5	Particulates-Deposited Matter	g/m <sup>2</sup> /month	Continuous	1	18/10/18	16/11/18	-	-	-	3.2
6	Particulates-Deposited Matter	g/m <sup>2</sup> /month	Continuous	1	18/10/18	16/11/18	Sample destroyed in lab during analysis			
7	PM <sub>10</sub>	µg/m <sup>3</sup>	Every 6 days	4	Various	05/11/18	8.9	28.4	26.7	76.1
9	Conductivity	µS/cm	Special Frequency 1*	-	-	-	-	-	-	-
	Total organic carbon	mg/L					-	-	-	-
10	Conductivity	µS/cm		-	-	-	-	-	-	-

## SUNNYSIDE COAL MINE – MONTHLY MONITORING SUMMARY

EPL ID	Pollutant	Units of Measure	Monitoring Frequency	No. of Samples for the Month	Date(s) Sampled	Date(s) Obtained	Min Value	Mean Value	Median Value	Max or Only Value
	Total organic carbon	mg/L	Special Frequency 1*				-	-	-	-
11	TSS	mg/L	Special Frequency 2**	-	-	-	-	-	-	-
	Conductivity	µS/cm		-			-	-	-	
	Oil & Grease	mg/L		-			-	-	-	
	pH	pH		-			-	-	-	
	Total organic carbon	mg/L		-			-	-	-	
12	TSS	mg/L	Special Frequency 2**	-	-	-	-	-	-	-
	Conductivity	µS/cm		-			-	-	-	
	Oil & Grease	mg/L		-			-	-	-	
	pH	pH		-			-	-	-	
	Total organic carbon	mg/L		-			-	-	-	

**Table 2 - Pollutant Limits Apply**

EPL ID	Pollutant	Units of Measure	Monitoring Frequency	No. of Samples for the Month	Date Sampled	Date Obtained	Min Value	Max Value	100%ile Limit	Exceedance (Yes/No)	Comments
9	TSS	mg/L	Special Frequency 1*	0	-	-	-	-	50	-	No discharge
	Oil & Grease	mg/L		0			-	-	10	-	No discharge
	pH	pH		0			-	-	6.5-8.5	-	No discharge
10	TSS	mg/L	Special Frequency 1*	0	-	-	-	-	50	-	No discharge
	Oil & Grease	mg/L		0			-	-	10	-	No discharge
	pH	pH		0			-	-	6.5-8.5	-	No discharge

\* Special Frequency 1 means the collection of samples as soon as practicable after each discharge commences and in any case not more than 12 hours after each discharge commences.





## SUNNYSIDE COAL MINE – MONTHLY MONITORING SUMMARY

\*\* Special Frequency 2 means collection of samples quarterly (in the event of flow during the quarter) at a time when there is flow and as soon as practicable after each wet weather discharge from points 9 and 10 commences and in any case not more than 12 hours after each discharge commences.

**Table 3- Noise Monitoring (Noise limits apply)**

EPL ID	Date	Start Time	Measurement Period	Measured Levels – dB(A)	Measured Levels – dB(A)	Limit	Wind speed/ direction	Compliant (Yes/No)	Comments
				Leq 15min Day	Leq 15min Evening				
13						35 dB(A) Leq (15 min)			
14						35 dB(A) Leq (15 min)			
15						35 dB(A) Leq (15 min)			
16									

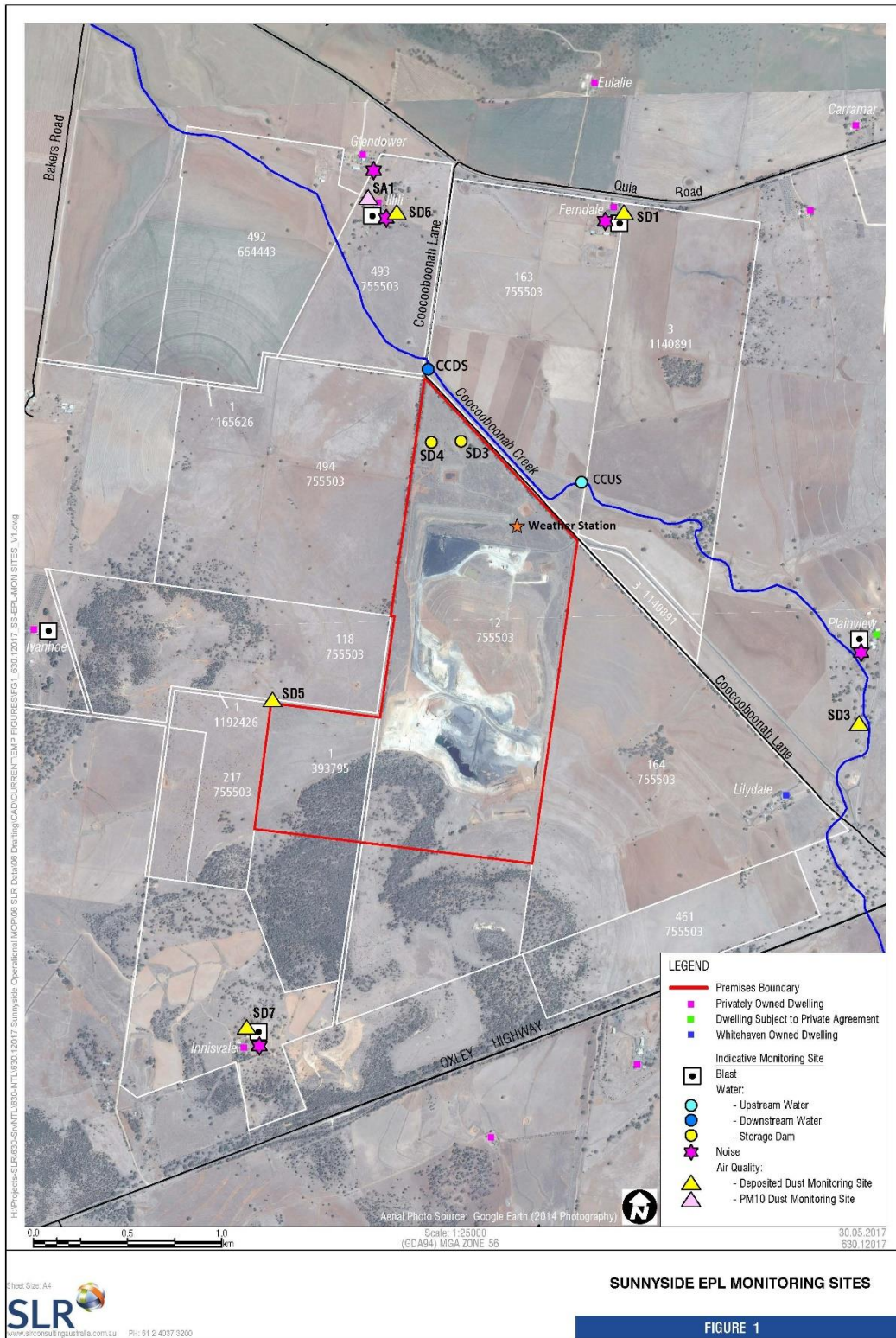
**SUNNYSIDE COAL MINE – MONTHLY MONITORING SUMMARY**

					35 dB(A) Leq (15 min)			
17					35 dB(A) Leq (15 min)			

**Table 4 – Monitoring (Blasts – Limits Apply)**

Location	Parameter	Units of Measure	Frequency	No. of Blasts for the Month	Average Value	Max or Only Value	100%ile Limit	(Potential) Non-compliance/breach
19	Blast Noise	dB (Lin Peak)	Every Blast	0			120	No
	Blast Vibration	mm/s					10	No
20	Blast Noise	dB (Lin Peak)	Every Blast	0			120	No
	Blast Vibration	mm/s					10	No
23	Blast Noise	dB (Lin Peak)	Every Blast	0			120	No
	Blast Vibration	mm/s					10	No
24	Blast Noise	dB (Lin Peak)	Every Blast	0			120	No
	Blast Vibration	mm/s					10	No
26	Blast Noise	dB (Lin Peak)	Every Blast	0			120	No
	Blast Vibration	mm/s					10	No

Figure 1 – EPL 12957 Monitoring Locations





## SUNNYSIDE COAL MINE – MONTHLY MONITORING SUMMARY

### Site Information

**EPL No:** 12957

**EPA Website Link:** <http://epa.nsw.gov.au/prpoeoapp/ViewPOEOLicence.aspx?DOCID=40292&SYSUID=1&LICID=12957>

**Licensee:** Namoi Mining Pty Ltd

**Licensee Address:** Sunnyside Coal Project, 259 Coocooboona Lane, GUNNEDAH NSW 2380

**EPL Monitoring Points:** See Figure 1 below

**Sampling Period:** December 2018

**Obtained Date:** 14<sup>th</sup> January 2019

**Publication Date:** 11<sup>th</sup> January 2019

**Table 1 - No Pollutant Limits Apply**

EPL ID	Pollutant	Units of Measure	Monitoring Frequency	No. of Samples for the Month	Date(s) Sampled	Date(s) Obtained	Min Value	Mean Value	Median Value	Max or Only Value
1	Particulates-Deposited Matter	g/m <sup>2</sup> /month	Continuous	1	16/11/18	18/12/18	-	-	-	3.6
2	Particulates-Deposited Matter	g/m <sup>2</sup> /month	Continuous	1	16/11/18	18/12/18	-	-	-	2.5
4	Particulates-Deposited Matter	g/m <sup>2</sup> /month	Continuous	1	16/11/18	18/12/18	-	-	-	4.3
5	Particulates-Deposited Matter	g/m <sup>2</sup> /month	Continuous	1	16/11/18	18/12/18	-	-	-	5.82
6	Particulates-Deposited Matter	g/m <sup>2</sup> /month	Continuous	1	16/11/18	18/12/18	-	-	-	4.51
7	PM <sub>10</sub>	µg/m <sup>3</sup>	Every 6 days	5	Various	11/01/19	27.8	38.74	35.3	45.5
9	Conductivity	µS/cm	Special Frequency 1*	-	-	-	-	-	-	-
	Total organic carbon	mg/L					-	-	-	-
10	Conductivity	µS/cm		-	-	-	-	-	-	-

## SUNNYSIDE COAL MINE – MONTHLY MONITORING SUMMARY

EPL ID	Pollutant	Units of Measure	Monitoring Frequency	No. of Samples for the Month	Date(s) Sampled	Date(s) Obtained	Min Value	Mean Value	Median Value	Max or Only Value
	Total organic carbon	mg/L	Special Frequency 1*				-	-	-	-
11	TSS	mg/L	Special Frequency 2**	-	-	-	-	-	-	-
	Conductivity	µS/cm		-			-	-	-	
	Oil & Grease	mg/L		-			-	-	-	
	pH	pH		-			-	-	-	
	Total organic carbon	mg/L		-			-	-	-	
12	TSS	mg/L	Special Frequency 2**	-	-	-	-	-	-	-
	Conductivity	µS/cm		-			-	-	-	
	Oil & Grease	mg/L		-			-	-	-	
	pH	pH		-			-	-	-	
	Total organic carbon	mg/L		-			-	-	-	

**Table 2 - Pollutant Limits Apply**

EPL ID	Pollutant	Units of Measure	Monitoring Frequency	No. of Samples for the Month	Date Sampled	Date Obtained	Min Value	Max Value	100%ile Limit	Exceedance (Yes/No)	Comments
9	TSS	mg/L	Special Frequency 1*	0	-	-	-	-	50	-	No discharge
	Oil & Grease	mg/L		0			-	-	10	-	No discharge
	pH	pH		0			-	-	6.5-8.5	-	No discharge
10	TSS	mg/L	Special Frequency 1*	0	-	-	-	-	50	-	No discharge
	Oil & Grease	mg/L		0			-	-	10	-	No discharge
	pH	pH		0			-	-	6.5-8.5	-	No discharge

\* Special Frequency 1 means the collection of samples as soon as practicable after each discharge commences and in any case not more than 12 hours after each discharge commences.

**SUNNYSIDE COAL MINE – MONTHLY MONITORING SUMMARY**

\*\* Special Frequency 2 means collection of samples quarterly (in the event of flow during the quarter) at a time when there is flow and as soon as practicable after each wet weather discharge from points 9 and 10 commences and in any case not more than 12 hours after each discharge commences.

**Table 3- Noise Monitoring (Noise limits apply)**

EPL ID	Date	Start Time	Measurement Period	Measured Levels – dB(A) Leq 15min Day	Measured Levels – dB(A) Leq 15min Evening	Limit	Wind speed/ direction	Compliant (Yes/No)	Comments
13	10/12/2018	12:54	90min	I/A		35 dB(A) Leq (15 min)	2.7 m/s, NE/NW	Y	I/A = inaudible contribution from mine
		19:27	30min		I/A		2.7 m/s,	Y	
	11/12/2018	07:16	90min	32			6.5 m/s, SE/ESE	Y	Birds, wind, aircraft, resident
		18:54	30min		I/A		7.8 m/s, ESE	Y	Birds, traffic, animals
	12/12/2018	9:13	90min	I/A			2.6 m/s, NNW/NE	Y	
		18:24	30min		I/A		3.5 m/s, NNE/NE	Y	
14	10/12/2018	08:48	90min	I/A		35 dB(A) Leq (15 min)	4.8 m/s, WNW	Y	
		18:49	30min		I/A		4.8 m/s, NNE/ESE	Y	
	11/12/2018	07:26	90min	35			6.5 m/s, SE/ESE	Y	
		18:23	30min		I/A		8.3 m/s, ESE	Y	
	12/12/2018	11:58	90min	26			2.4 m/s, NW/SW	Y	
		18:27	30min		I/A		3.5 m/s, NE	Y	
15	10/12/2018	07:06	90min	I/A		35 dB(A) Leq (15 min)	5.8 m/s, W/WNW	Y	
		18:46	30min		I/A		4.8 m/s, NNW/ESE	Y	
	11/12/2018	09:01	90min	34			4.3 m/s, E/ESE	Y	
		19:31	30min		I/A		6.7 m/s, E/ESE	Y	

## SUNNYSIDE COAL MINE – MONTHLY MONITORING SUMMARY

	12/12/2018	10:54	90min	I/A			1.7 m/s, NW/SW	Y	
		19:03	30min		I/A		3.7 m/s, NE	Y	
16	10/12/2018	10:50	90min	N/M		35 dB(A) Leq (15 min)	4.5 m/s, W/WNW	Y	N/M = Not measured
		20:14	30min		N/M		6.7 m/s, ENE	Y	
	11/12/2018	10:50	90min	I/A			4.7 m/s, E/ESE	Y	
		20:17	30min		I/A		4.9 m/s, ESE	Y	
	12/12/2018	07:22	90min	30			3.5 m/s, E/ENE	Y	
		19:49	30min		I/A		3.7 m/s, E/ENE	Y	
17	10/12/2018	12:48	90min	I/A		35 dB(A) Leq (15 min)	2.7 m/s, WSW/NW	Y	
		19:51	30min		I/A		5.7 m/s, ESE	Y	
	11/12/2018	09:44	90min	I/A			4.3 m/s, ESE	Y	
		20:07	30min		I/A		4.9 m/s, ESE	Y	
	12/12/2018	07:32	90min	32			3.5 m/s, ENE/NE	Y	
		20:07	30min		37		3.1 m/s, ENE/NE	Y	

**Table 4 – Monitoring (Blasts – Limits Apply)**

Location	Parameter	Units of Measure	Frequency	No. of Blasts for the Month	Average Value	Max or Only Value	100%ile Limit	(Potential) Non-compliance/breach
19	Blast Noise	dB (Lin Peak)	Every Blast	2	104.7	107.1	120	No
	Blast Vibration	mm/s			0.36	0.48	10	No
20	Blast Noise	dB (Lin Peak)	Every Blast	2	97.75	103.6	120	No
	Blast Vibration	mm/s			0.35	0.36	10	No
23	Blast Noise	dB (Lin Peak)	Every Blast	2	101.85	107.2	120	No



**SUNNYSIDE COAL MINE – MONTHLY MONITORING SUMMARY**

	Blast Vibration	mm/s			0.53	0.71	10	No
24	Blast Noise	dB (Lin Peak)	Every Blast	2	104.25	112.5	120	No
	Blast Vibration	mm/s			0.34	0.43	10	No
26	Blast Noise	dB (Lin Peak)	Every Blast	2	102.2	103.8	120	No
	Blast Vibration	mm/s			0.91	1.03	10	No



**Figure 1 – EPL 12957 Monitoring Locations**

